

CELEBRATING  
**25**  
YEARS  
1997-2022

**Fab-Tool**  
INDUSTRIES

[www.fabtool.in](http://www.fabtool.in)



## ADDING WINGS FOR A SELF SUSTAINED GLOBE

---

Construction and Mining Equipment Parts

---

Mineral Processing Equipment Parts

---

Surface and Underground Rock Drilling Equipment Parts

---

Tyre Manufacturing and Curing Machinery Parts

---

General Engineering Fabrication (Medium & Heavy)

---







Unit - 1: Budigere Cross Road, Bengaluru



Unit - 2: KIADB Industrial Area, Malur

Fab Tool Industries, a stalwart entity in the domain of Medium and Heavy Engineering Fabrication, has left an indelible mark on the landscape of industrial excellence since its establishment in 1997. We proudly house two cutting-edge facilities, strategically positioned in the vibrant hubs of Bengaluru and Malur, serving as the epicenters of our innovation and precision.

In 25 years, Fab Tool Industries has emerged as a global leader in high-value engineering fabrication, prioritizing quality, safety and environmental responsibility. As vanguards for two decades, we set industry standards globally, crafting components for diverse sectors like Road Construction, Mining, Material handling and General Engineering. Our operational strength, featuring cutting-edge capabilities and a robust 25-ton material handling capacity, stands testament to our commitment to excellence. Join us in sculpting an innovative tomorrow where engineering mastery transforms aspirations into reality.

Dedicated to excellence, Fab Tool Industries relentlessly pursues perfection through continuous improvement. Integrating environmentally sustainable practices and cutting-edge technologies, we solidify our position as an industry exemplar.



## Recognition & Awards



## VISION & MISSION ►

We aspire to stand as a premier source of top-tier engineered products, renowned on a global scale, serving markets near and far. Our dedication extends to the pursuit of excellence in quality, safety, and environmental stewardship, all while guaranteeing an unmatched level of customer delight.

At Fab Tool Industries, we set our sights on the world stage, aspiring to emerge as a distinguished leader in the realm of engineering steel fabrication. Our path to global recognition is paved with the commitment to crafting products of unparalleled excellence, designed not just to meet but to surpass our customers exacting demands and aspirations.

## QUALITY ►

At Fab Tool Industries, our hallmark is the relentless pursuit of quality, an attribute that has propelled us into the echelons of industry acclaim. Each product we conceive embarks on a voyage through our rigorous in-house quality inspections, guided by an unwavering commitment to surpass industry standards. We do not merely boast of timely deliveries; we proudly present a holistic experience, where comprehensive documentation is woven into the fabric of our service, underlining our dedication to both precision and punctuality.

Fab Tool Industries is accredited with three prestigious certifications, ISO 9001-2015, ISO 14001-2015 and ISO3834-2 through which we have exhibited the capability and ability in the maintenance of quality and environmental safety.



ISO 9001 : 2015



ISO 14001 : 2015



ISO 3834-2

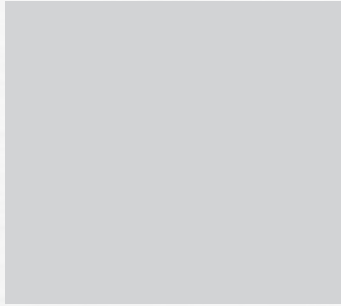


# MAJOR MANUFACTURING FACILITIES AT UNIT-1 AND UNIT-2

Fab Tool Industries has the advanced CNC machines, material handling, manufacturing process to produce quality products with timely delivery.



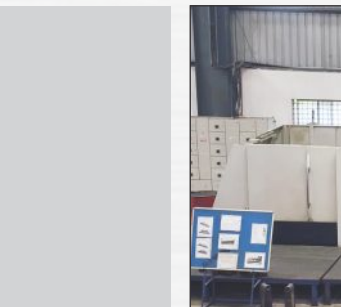
Make: DNE Bystronic - Laser Profile Cutting Machine - 6KW  
Cutting Size - 2500mm X 6500mm - With Dual Pallet Type



Make: MESSER - CNC OXY Profile Cutting - W-6 Mtr X L-32 Mtr  
Make: Hypertherm - CNC Plasma Profile Cutting - 260 HPR



Make: H&H - CNC Bending Machine - BL-6.5 Mtr X 650 Ton  
with Delem Control



Make: KAO MING - CNC 5 Face Vertical Machining Center  
X - 5500mm, Y - 2500mm, Z - 1850mm



Make: WMW - CNC H Boring Machine with Rotary Table  
X - 3100 mm, Y - 1600mm, Z - 1600mm

UNIT-1

Land Area : 1 Acre  
Budigere Cross :  
(43000 Sqft)

Power : 500 KVA

UNIT-2

Land Area : 3 Acre  
KIADB 4th Phase Malur  
(132000 Sqft)

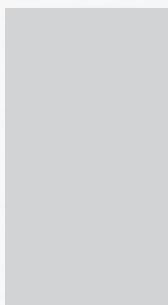
Power : 650 KVA



Make: DORRIES - Vertical Turret Lathe,  
Turning Diameter - 2200mm



Make: DAVI - CNC 4 Roll Plate Bending Machine  
Rolling Width - 3100mm



Painting Booth  
W - 5000mm, H - 5000mm, L - 12000mm

Shot Blasting Booth  
W - 5000mm, H - 5000mm, L - 12000mm





### Material Handling Facilities

25 Ton EOT Crane	02 No's
20 Ton EOT Crane	01 No's
10 Ton EOT Crane	06 No's
05 Ton EOT Crane	10 No's
JIB Cranes	10 No's
2.5 Ton Fork Lift	01 No's

### CNC Profile Cutting Machine

Make - DNE Bystronic : 6KW Laser M/c	01 No's
Size : 2500mm X 6500mm - Dual Pallet Type	
Make - Hypertherm Plasma M/c	02 No's
260 HPR with True Hole Technology	
Make - Messer Oxy-fuel with Alpha Torch	04 No's
Size : 6500mm X 35000mm	
Make - Messer Omni Cut Oxy-fuel	01 No's
Size : 4100mm X 16000mm	

### CNC Press Brake Machine-H&H make

650 Ton X 6500mm width	01 No's
400 Ton X 4100mm width	01 No's
100 Ton X 2500mm width	01 No's

### CNC Plate Rolling Machine-Davi Make

4 roller X 3100mm width, 32mm Thick	01 No's
3 roller X 1800mm width, 08mm Thick	01 No's

### MIG and TIG Welding M/cs

35 No's

### Shot Blasting Chamber

Unit 1 - Size : 5.5mtr X 5mtr X 06mtr	01 No's
Unit 2 - Size : 5.5mtr X 5mtr X 12mtr	01 No's

### Painting Booth

Unit 1 - Size : 5.5mtr X 5mtr X 06mtr	01 No's
Unit 2 - Size : 5.5mtr X 5mtr X 12mtr	01 No's

### Machining Facilities

CNC Double Column VMC - Kao Ming	01 No's
X-5500mm, Y-3150mm, Z-1450mm with 32 ATC	
CNC Double Column VMC - Kao Ming	01 No's
X-3250mm, Y-1800mm, Z-1050mm with 32 ATC	
CNC H Boring Machine - WMW	01 No's
X-3000mm, Y-1250mm, Z-1250mm with 64 ATC	
VTL Machine - Turning Dia -2200mm	01 No's
HMT RM-63 Radial Drilling M/cs	07 No's
Kirloskar Lathes	04 No's
Bandsaw Maximum Dia :350mm	01 No's

### PLANS TO INTEGRATE TWO HIGHLY ADVANCED MACHINES

#### ROBO Welding Machine

Make : Panasonic - High Power TAWER, 6 Axis	02 No's
---	---------

#### 6 Axis CNC Floor-type Horizontal Boring Machine

Make : FERMAT	01 No's
4 Axis Rotary Table of size 3000mm X 3500mm and job weight of 40T	
X - 12000mm, Y - 3500mm, Z-700mm	



### Future Expansion

Unfurling its wings at our Malur plant, Our expansion introduces a sprawling 45,000 sq ft shop floor and an elegant 21,000 sq ft office block, seamlessly intertwining with our current facilities.



## CONSTRUCTION EQUIPMENT PARTS

**Excavator Equipment Parts :** Track Frame / Under Carriage, Revolving Frame / Turret Bati, Boom, Arm, Buckets ranging from 0.9 Cu Mtr. to 3.1 Cu Mtr, all types of Connecting Links (BABC, BACR), Rock Breaker Bracket, Wheel Loader Buckets, etc.,

**Road Construction Equipment Parts :** Main Frame, Drum Frames, Chassis for Compactors, Front Bumper, Rear Bumper, Water Tank Support, Drum and Engine Mounting Brackets, etc.,

**Motorgrader Parts:** Bottom Turntable, Top Turntable, Boom, Yoke Assy and Tandem Box, etc.,

**Mineral Processing equipment Parts :** Power Screen Crusher and Screener Assemblies, etc.,



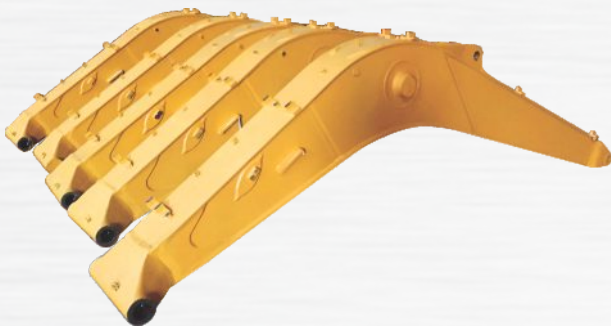
PRODUCTS



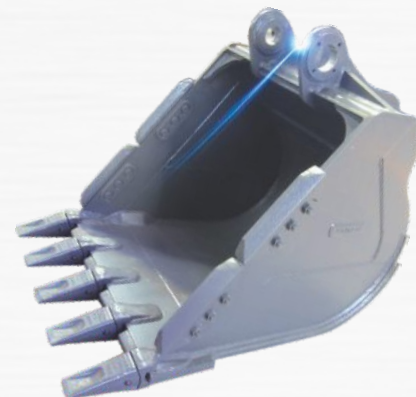
Track Frame / Under Carriage



Arm for Excavator



Booms for Excavator



Excavator - Heavy Duty Bucket



3.1 Cu Mtr. Bucket



Excavator - Heavy Duty Bucket



Bucket



Connecting Links (BABC, BACR)



2.2 Mtr. Stick



Dozer Blade



Revolving Frame / Turrent Bati

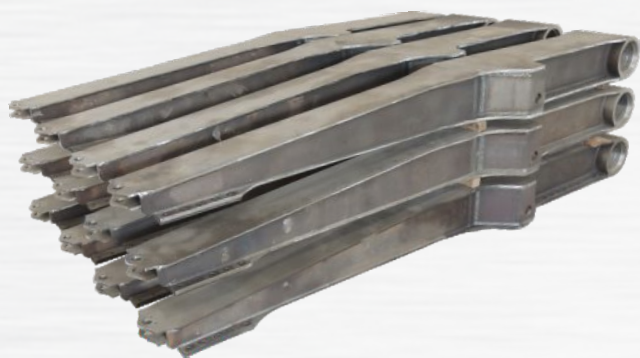




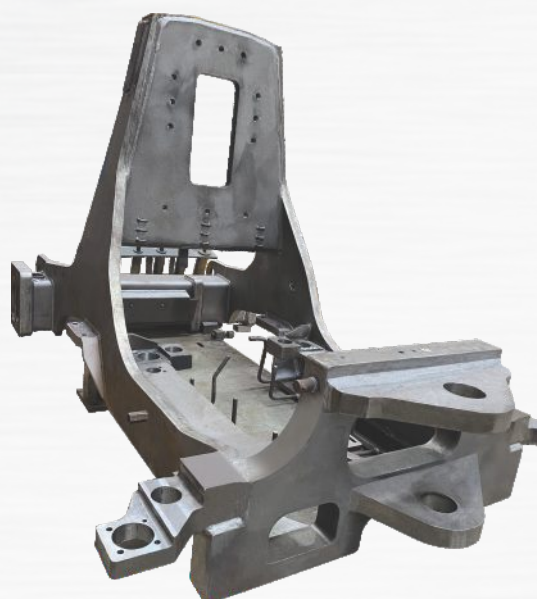
Boom for Rock Drilling Machine



Boom for Rock Drilling Machine



Feed Holder for Rock Drilling Machine

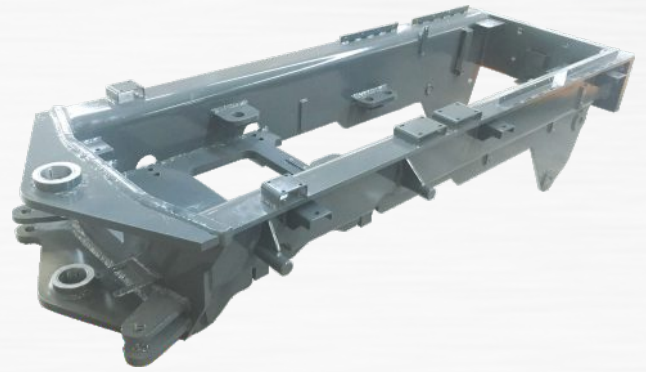


Front Frame





Tandem Box



Main Body



Motor Grader Boom



Bottom Turntable



Mobile Crane  
Front Body Assembly



Chassis for 45 Ton Crane



## GENERAL ENGINEERING EQUIPMENT PARTS

### Tyre Build Machine:

Mechanical Press Parts, Base Assy, Top Link Assy, Side Link Assy, Side Plate Assy, Guide Brackets, Steam Platens, Gear Case Unit, Top Structure and Bottom Structures for Hydraulic Press.

### BENEFITS

At Fab-Tool Industries, our aim is to provide our valued customers with a wide range of high quality products that are competitively priced and assured to deliver on time.

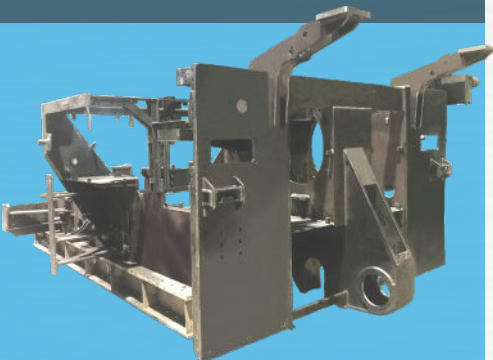
- ⦿ Having a rated monthly Capacity of 1000-1200 MT of various steel fabricated products.
- ⦿ A strong Sourcing Team has managed to forge long standing partnerships with Domestic and International plate manufacturing mills.
- ⦿ Availability of Raw Material Grade: IS 2062 E 250 BR/BO, IS 2062 E 350 C/S355J2+N, E450, HARDOX-400/EH-400LE/QUARD-400, STRENGTH-700/HITEN-780S/QUEND-700 BQ Grade Plates. Thickness ranging from 2mm to 250mm
- ⦿ Highly Qualified Designers are backed up with design software tools such as AutoCAD, Solidworks and CMM with Polyworks Software to meet the customer requirement.
- ⦿ Employing Certified and Highly Qualified Engineers to manage the in house Production process, Quality, Safety and Environmental Aspects.
- ⦿ GROWING WITH NEW TECHNOLOGIES - Keeping pace with technological advancements through upgradation of machinery and upskilling human resources.



Chute Assembly



Screen Assembly

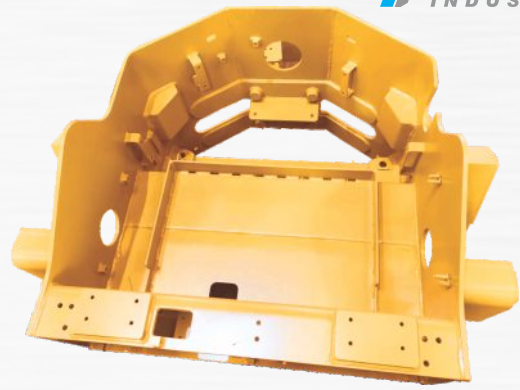


Paver Machine Frame

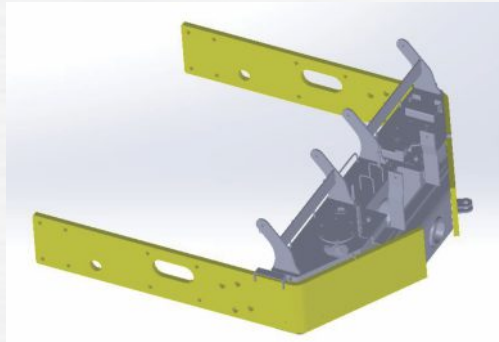




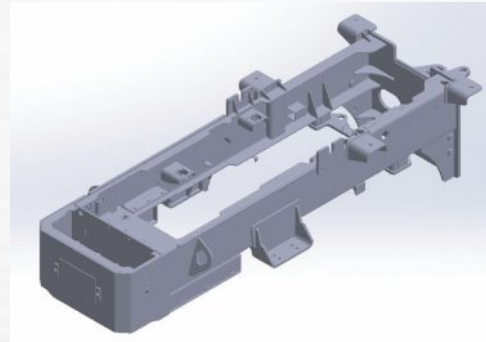
10T Rear Chassis for Compactor



4T Rear Chassis for Compactor



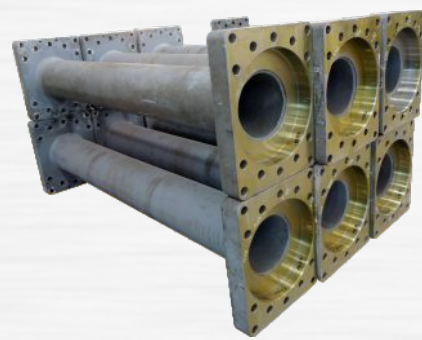
Front Frame for Compactor



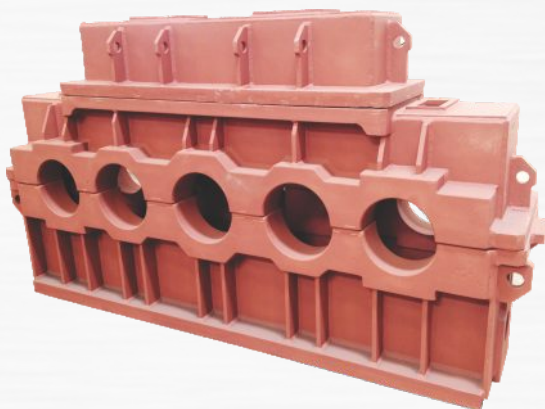
Main Frame for Compactor



Frames for Crusher Machine



Pipe Spacer



Gear Box Housing



Tyre Curing Press - Base Assembly



## Designers and Manufacturers of

Construction and Mining Equipment Parts

Mineral Processing Equipment Parts

Surface and Underground Rock Drilling Equipment Parts

Tyre Manufacturing and Curing Machinery Parts

General Engineering Fabrication (Medium & Heavy)

### Dedicated to Environmental Harmony



The electricity powering our operations is generated in-house through a state-of-the-art solar system, and any excess power is seamlessly supplied back to the BESCOM board, reducing our carbon footprint and supporting a cleaner energy ecosystem.



### CLIENTS

**KOMATSU**



**L&T Construction  
Equipment**



**TSS** | **TATA AUTOCOMP SYSTEMS**  
Supply Chain Solutions

**Epiroc**



**L&T Rubber  
Processing Machinery**

**metso  
Outotec**

**TEREX®**

**HOMAG**

**beml**  
NEW FRONTIERS, NEW DREAMS

**Fab-Tool**  
INDUSTRIES

#### Unit-1

Sy.No.134, Bommenahalli Road  
Budigere Cross Road, Virgonagar Post  
Off.Old Madras Road,  
Bengaluru-560 049, Karnataka, India

#### Unit-2

Plot No. 59 & 73  
KIADB Industrial Area, 4th Phase  
Malur, Kolar Dist.-563 130  
Karnataka, India

E:info@fabtool.in, murali@fabtool.in, rsr@fabtool.in

M:+91-98452 99288 / +91-98865 54469

W :www.fabtool.in

